



# unIFY Control Panel

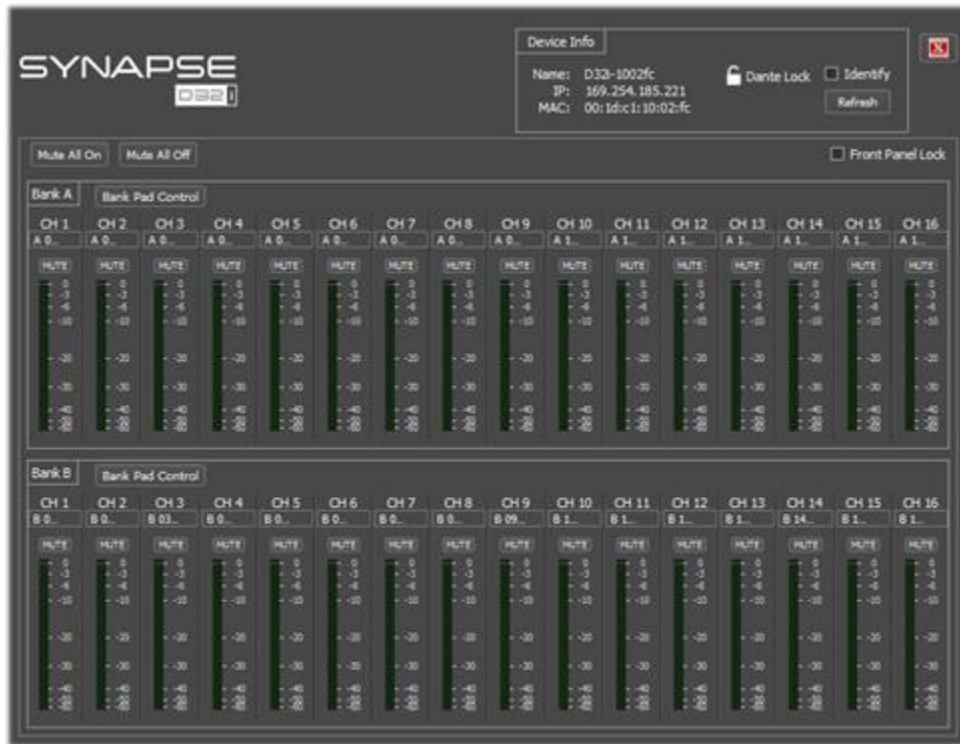
## Synapse D32i Configuration



QSC, LLC • 1675 MacArthur Boulevard • Costa Mesa, CA 92626  
Ph: 800/854-4079 or 714/957-7100 • Fax: 714/754-6174

© 2020 QSC, LLC all rights reserved. QSC and the QSC logo are registered trademarks of QSC, LLC in the U.S. Patent and Trademark office and other countries. All other trademarks are the property of their respective owners. Patents may apply or be pending.

[www.qsc.com](http://www.qsc.com)



## Bank Pad Control

The 32 inputs is split into two banks and each bank has a pad control to set the input level. The pad setting applies to all inputs in the bank and cannot be set individually for each input. Turn the pad on to set nominal +4dBu (pro) input levels or turn it off for nominal -10dBV (consumer) input levels.

## Mute All On/Off

Clicking the “Mute All On” activate the mute function on all 32 inputs simultaneously. Conversely, the “Mute All Off” deactivates it. Individual mute states are not maintained when these functions are used.

## Front Panel Lock

Activating the “Front Panel Lock” option will prevent users from changing the monitoring settings from the front panel of the D32i. When enabled, the monitor facility is locked to whatever channel was selected when the lock is applied.

## Dante™ TX Channel Name

The Dante™ TX channel name is shown just below the channel number for each channel and represents the Dante™ transmit channel name as it appears on the Dante™ network for each analog input channel. The box is small so the entire name may not be displayed. To see the full name, hover over the name and a pop-up hint will appear showing the entire name.

*\*Note: This field is non-editable. To edit the channel names, use the device list view control or use Dante™ Controller.*



## Mute

Each input has its own mute. The state of the button indicates its state with dark grey meaning the mute is inactive and orange indicating the mute is active. Click the button to change the mute state.