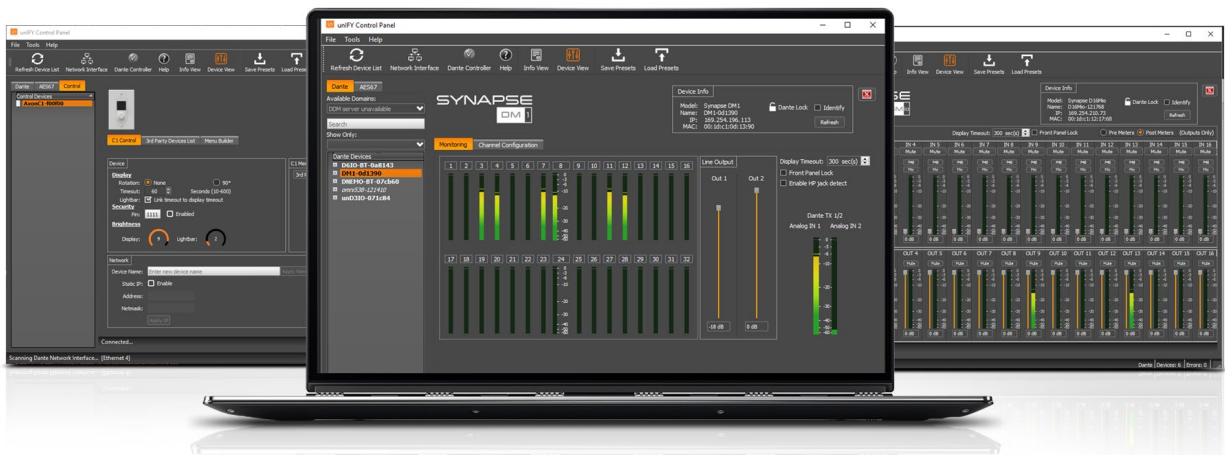




unIFY Control Panel

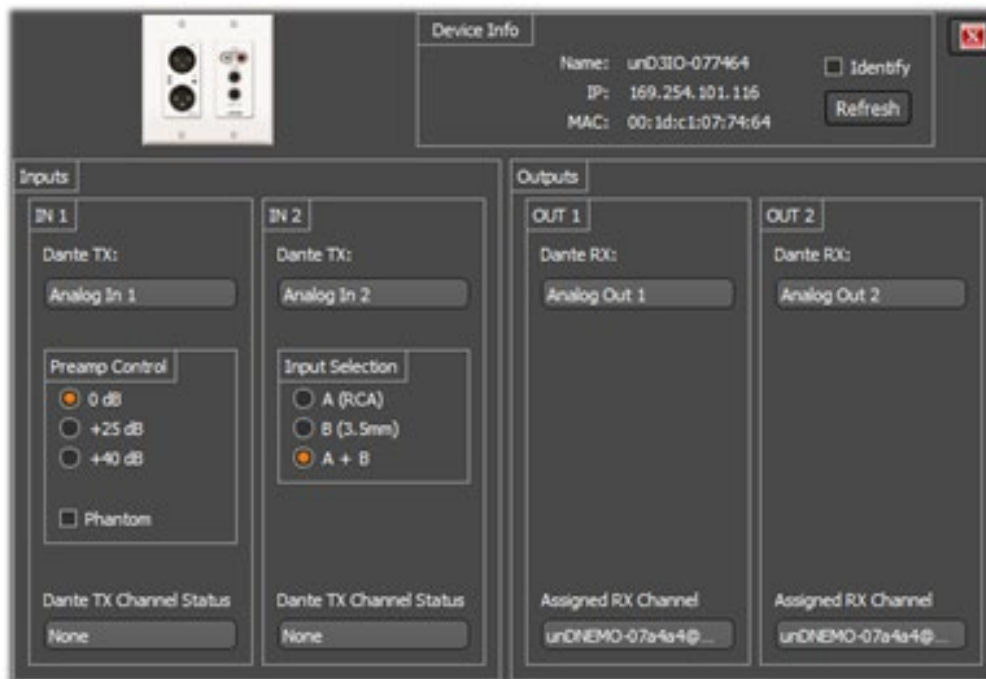
unD3IO Configuration



QSC, LLC • 1675 MacArthur Boulevard • Costa Mesa, CA 92626
Ph: 800/854-4079 or 714/957-7100 • Fax: 714/754-6174

© 2020 QSC, LLC all rights reserved. QSC and the QSC logo are registered trademarks of QSC, LLC in the U.S. Patent and Trademark office and other countries. All other trademarks are the property of their respective owners. Patents may apply or be pending.

www.qsc.com



The configuration software for the unD3IO is organized into the following key sections:

- Inputs
- Outputs

**Note: Any changes made to device settings will only persist until power is cycled on the device. To retain the settings, they must be stored to Preset 0 using the Save Presets feature within unIFY Control Panel.*

Inputs



Dante™ TX Channel Name

This text field reports the Dante™ transmit channel name shown on the Dante™ network for corresponding analog input channels.

**Note: This field is non-editable. To edit the channel names, use the device list view control or us Dante™ Controller.*

Preamp Control

The Preamp Control section allows the user to adjust the microphone preamp gain settings and phantom power states for the corresponding inputs.

Input Select Control

***Note:** The unD3IO has two Dante™ transmit channels. The first is connected to the XLR input. The second is a mono sum of the selected stereo line level input(s).

The unD3IO features an input selection option for the line level analog inputs routed to the second Dante™ transmitter channel. Using option *A* selects the mono mix of the two RCA inputs. Using option *B* selects the mono mix of the two stereo jack inputs and using option *A+B* selects options *A* and *B* mixed together.

Dante™ TX Channel Status

This text field reports the number of active Dante™ receive devices for the corresponding transmitter channel. If no devices are subscribed to the transmitter channel the text field will report *None*.

***Note:** This is a read-only field and any channel routing configuration must be performed within Dante™ Controller

Outputs



Dante™ RX Channel Name

This text field reports the Dante™ receive channel name shown on the Dante™ network for corresponding analog output channels.

***Note:** This field is non-editable. To edit the channel names, use the device list view control or use Dante™ Controller.

RX Channel Assignment

This text field reports the currently assigned Dante™ transmit channel to the corresponding receive channel. If no channel is assigned, the text field will report *None*.

***Note:** This field is non-editable. To edit the channel names, use the device list view control or use Dante™ Controller.